

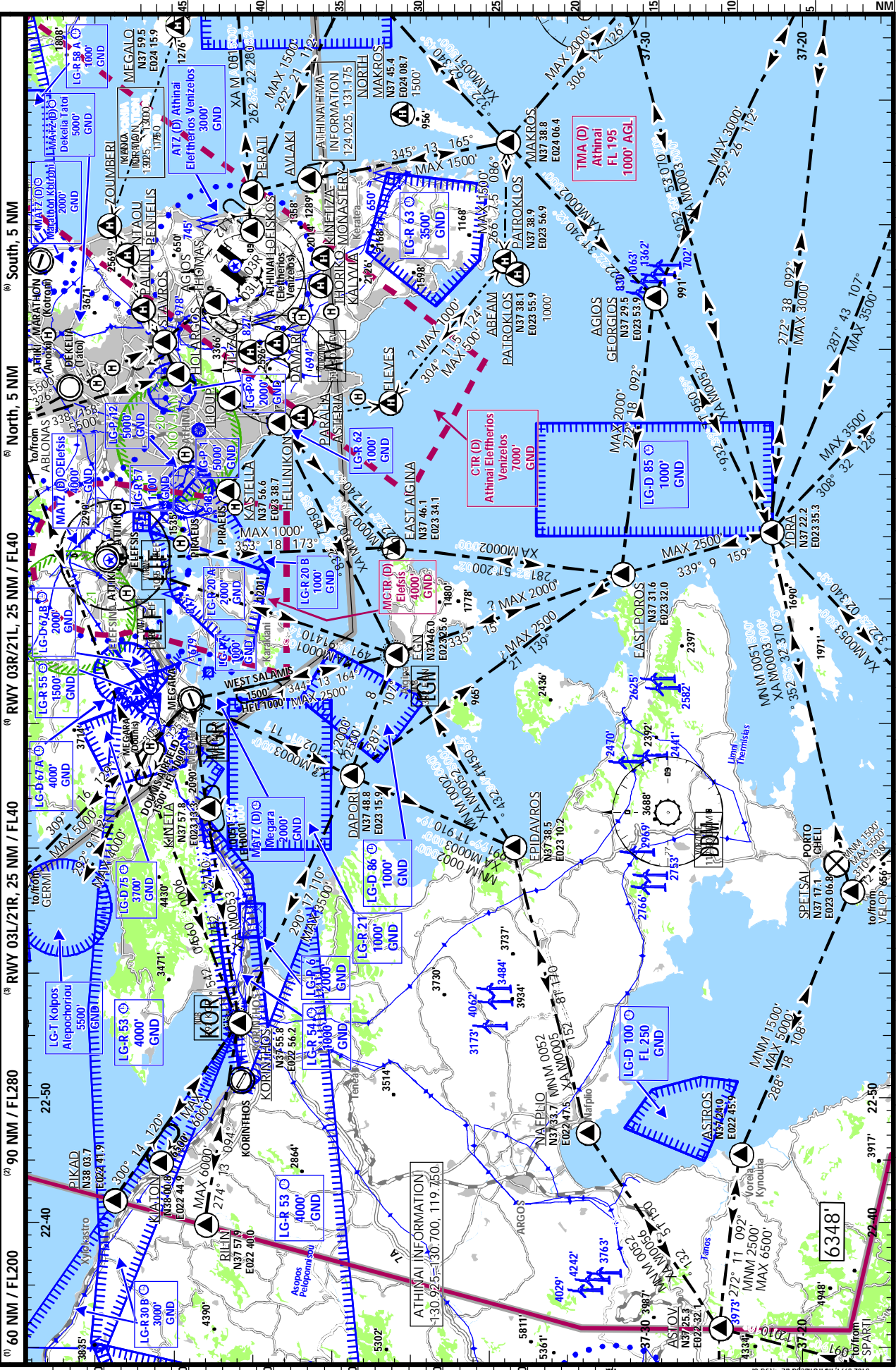
ATHINAI
GREECE

15 SEP 23
(19-1)

LGAV
ELEFTERIOS VENIZELOS

LOCATION	FIS	ATIS	APPROACH
Elev 308' /94m	ATHINAI TMA INFORMATION 124.025 131.175	ATIS 136.125 ⁽¹⁾ (en)	ATHINAI APPROACH 128.950 ⁽²⁾ (gr, en) 125.525 ⁽³⁾ (gr, en) 132.975 ⁽²⁾ (gr, en)
N37 56.2 E023 56.7	MAKEDONIA INFORMATION 130.925 130.700 119.750		121.400 ⁽²⁾ (gr, en) 130.025 ⁽³⁾ (gr, en) 126.575 ⁽²⁾ (gr, en)

TOWER	FIS	ATIS
VENIZELOS TOWER 136.275 ⁽³⁾ (en) 118.625 ⁽⁴⁾ (en)		
VENIZELOS GROUND 121.805 121.905		
121.755 ⁽⁵⁾ 121.955 ⁽⁶⁾		



TOWER			
VENIZELOS TOWER	136.275 ⁽³⁾	118.625 ⁽⁶⁾	(en)
VENIZELOS GROUND	121.805	121.905	
	121.755 ⁽⁶⁾	121.955 ⁽⁶⁾	



LGAV ARR/DEP
ELEFTHERIOS VENIZELOS

15 SEP 23 19-1B

ATHINAI
GREECE

LOCATION Elev 308' /94m N37 56.2 E023 56.7	FIS ATHINAI TMA INFORMATION 124.025 131.175 MAKEDONIA INFORMATION 130.925 130.700 119.750	ATIS ATIS 136.125 ⁽ⁿ⁾ (en)
	APPROACH ATHINAI APPROACH 128.950 ⁽²⁾ (gr, en) 125.525 ⁽²⁾ (gr, en) 132.975 ⁽²⁾ (gr, en) 121.400 ⁽²⁾ (gr, en) 130.025 ⁽²⁾ (gr, en) 126.575 ⁽²⁾ (gr, en)	TOWER VENIZELOS TOWER 136.275 ⁽ⁿ⁾ (en) 118.625 ⁽ⁿ⁾ (en) VENIZELOS GROUND 121.805 121.905 121.755 ⁽ⁿ⁾ 121.955 ⁽ⁿ⁾

(1) 60 NM / FL200 (2) 90 NM / FL280 (3) RWY 03L/21R, 25 NM / FL40 (4) RWY 03R/21L, 25 NM / FL40 (5) North, 5 NM (6) South, 5 NM

